



Innovationspark KI  
Baden-Württemberg

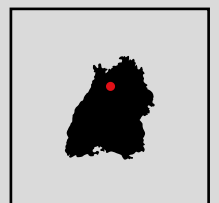
# AI MADE IN BW

Sustainable AI Innovation Park Baden-Württemberg  
with international appeal for artificial intelligence  
that benefits people



AI Innovation Park Baden-Württemberg

*A SUSTAINABLE*  
**INNOVATION  
PARK IN A  
WORLD-CLASS  
FORMAT**



# Introduction

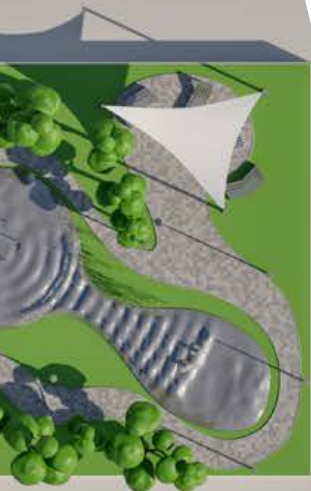
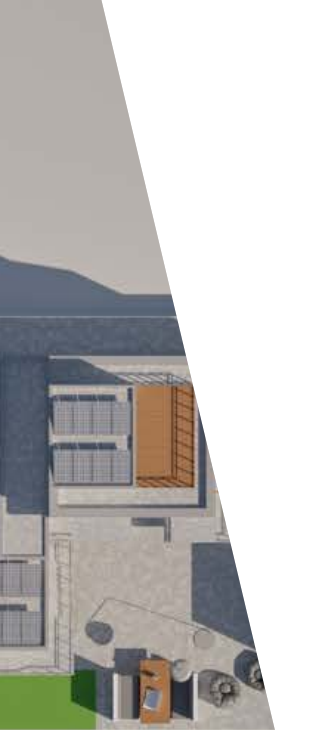
Baden-Württemberg has an excellent global reputation as a cradle of groundbreaking innovations. It is the birthplace of many revolutionary, now globally established key technologies such as automobiles, as well as other pioneering products, services, and solutions.

Today, more than 130 years after the development of modern cars, we are witnessing a new revolution. The application of Artificial Intelligence (AI) techniques on new and existing technologies will fundamentally change our living and working environments. It is a great opportunity for Baden-Württemberg and the people of the country to help shape the development of artificial intelligence in the future and to build up new economic strengths in the field of artificial intelligence. Baden-Württemberg is already ranked first among all German states on the AI map of the platform “Lernende Systeme” (Engl.: learning systems). With initial funding from the state government, the AI Innovation Park Baden-Württemberg is now set to be realised in Heilbronn, writing a new chapter in the state’s successful innovation history as one of the major visions for the innovation policy of Baden-Württemberg.

 *Within the framework of the economic stimulus package “Zukunftsland BW – Stärker aus der Krise” of the Baden-Württemberg state government, the AI Innovation Park will be funded with up to 50 million euros.*

The background features several aerial architectural renderings of futuristic buildings and green spaces. The buildings have unique, rounded, and spherical designs. The green spaces are lush and include trees, walkways, and small structures. The overall scene is set against a light gray background with soft shadows. A large, textured red shape is on the left side of the image.

**A CENTRE OF  
AI VALUE CREA-  
TION IN BADEN-  
WÜRTTEMBERG**



Baden-Württemberg aspires to play in the world league of AI hotspots. To this end, scientific excellence in AI will be used to an even greater extent in future for economic strength. Appropriate structures are to be created in order to raise the state's profile as an international centre for AI value creation even further.

Despite the trend towards virtualisation, innovations in the field of artificial intelligence need room and physical spaces where creative people can use outstanding infrastructure to test and further develop innovative solutions in areas such as climate protection, health, mobility, and production. With this in mind, the AI Innovation Park, as a value centre, is intended to offer optimal conditions for innovation and location.

The feasibility study carried out by CBRE on behalf of the Ministry of Economic Affairs, Labour and Tourism Baden-Württemberg examined the key success factors for the implementation of the AI innovation park. To this end, a two-stage process was conducted to talk with key stakeholders in the field of AI from Baden-Württemberg, Germany, and around the world. Furthermore, numerous telephone, video, and face-to-face interviews were conducted (60 inter-

views with 79 different interviewees) as well as a large-scale online survey (1,090 participants).

#### Great interest in AI Innovation Park

The feasibility study has revealed positive and widespread support for the AI Innovation Park. The surveys showed both in depth and breadth that there is a consistently high level of interest in the AI Innovation Park.

*The basic attitude of interviewees to a large-format AI Innovation Park is significantly positive by a large majority (82%). One of the most frequently mentioned reasons for this positive attitude is the expectation that the state of Baden-Württemberg could profile itself even more strongly as a leading AI location on a global scale with its own AI Innovation Park.*

# VISIONARY PERSPECTIVE

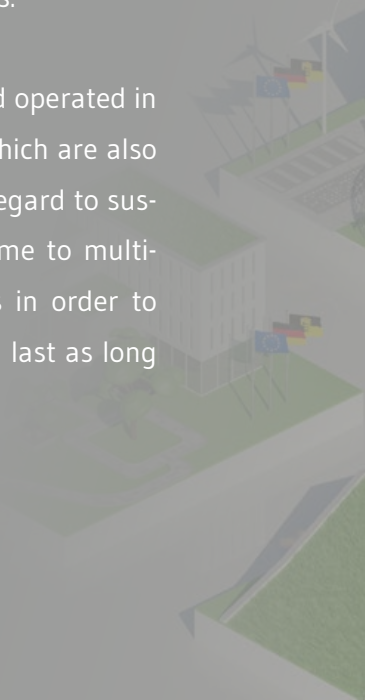


When looking from a bird's-eye view, the generosity of the plant with its high proportion of nature and green spaces can be seen. The image is shaped by buildings of different heights and sizes, each of which has its own unique character. Functionality and design are closely linked here.

Cutting-edge and climate-friendly data centres, perfectly networked test sites, laboratories, industry halls, collaborative spaces, event spaces, showrooms and, in particular, meeting spaces for people are core components of the AI Innovation Park.

In addition to working and research areas, temporary living at the Innovation Park is facilitated. The park thus combines working and living environments and provides scope for diversity and modern lifestyles.

The Innovation Park is set up and operated in line with ecological standards, which are also designed to set standards with regard to sustainability. The buildings are home to multi-functional and variable surfaces in order to guarantee that the buildings will last as long as possible.



S

Buildings and infrastructure are designed to be as flexible as possible to account for rapid changes in requirements in the area of AI. The infrastructure offers many opportunities for collaboration and communication.

The AI Innovation Park will itself serve as a Real-World Laboratory where innovative technologies such as autonomous production and logistics, as well as new supply structures, can be tested and evaluated. The Innovation Park is an international centre for ethical and human-centred AI.

Computing power is provided by dedicated, energy-efficient micro data centres which can also act as a network. The AI Innovation Park offers access to large and (data) secure data pools in various thematic areas.

In the future, entirely new technologies such as quantum computing shall also be made available. One of the fastest European internet nodes is making the AI Innovation Park a hub for data-intensive companies.

The picture is rounded off by modern mobility services, excellent integration with public transport, and sufficient space for cyclists and pedestrians.

Infrastructure

# PEOPLE AT THE HEART OF AI



Business, Start-ups, Research, Talent

# ROOM FOR COOPERATION



The park's ecosystem is the ideal breeding ground for innovative developments in the world of AI. It is made up of an active network of local and international AI companies, branches, start-ups, founders, universities, research institutions, and investors who exchange ideas and join forces for projects.

SMEs and large companies have access to AI start-ups with new ideas, which in turn can use real-world data to optimise their algorithms. Extremely ambitious founders are being helped to be economically successful out of Baden-Württemberg in the global innovation competition by enabling both internationally competitive financing and access to top-level decision-makers.

Students and graduates find a network that opens up exciting career opportunities both in companies and in start-ups. The network is open to all interested parties, regardless of nationality, ethnic origin, religion, or gender, and specifically promotes projects to eliminate inequalities.



The Innovation Park can take many forms, and a few ideas on these are illustrated below:

## Building blocks of the Innovation Park



***OPEN TO A  
CULTURE OF  
INNOVATION***

User benefits

# PLATFORM FOR *INTELLIGENT* FUTURE SOLUTIONS

The AI Innovation Park Baden-Württemberg is intended to reach a broad audience and meet the expectations of various users.

Those who took part in the online survey as part of the feasibility study expect the AI Innovation Park to maintain strong networking, cooperation, and a good ecosystem within the park (68.7%). Access to AI talents (38.7%), use of Real-World Laboratories and test fields (36.1%) and access to modern information- and telecommunication-technologies infrastructures (5G, high performance computing, and quantum computers) is also mentioned at 35.5%.

# 1,090

participants took part in the online survey.

# NT



## Results of the online survey – expectations of participants in the AI Innovation Park

in %



## **Publishing Details:**

This exposé on the  
AI Innovation Park Baden-Württemberg  
was produced by:

CBRE GmbH  
OMNITURM  
Große Gallusstrasse 18  
60312 Frankfurt  
+49 (0)69 170077 0 (Switchboard)  
info.frankfurt@cbre.com  
www.cbre.de

## **Contracting Entity:**

Ministry of Economic Affairs, Labour and Tourism  
Baden-Württemberg  
Schlossplatz 4 (Neues Schloss)  
70173 Stuttgart  
+49 711 123 0 (Switchboard)  
pressestelle@wm.bwl.de  
www.wm.baden-wuerttemberg.de  
www.ai-park-bw.biz

## **Concept & Design:**

fu communications GmbH & Co. KG  
Niederurseler Allee 8-10  
65760 Eschborn  
+49 176 6173 7866  
fm@fu-com.de  
www.fu-com.de

2022



**Innovationspark KI  
Baden-Württemberg**



**Baden-Württemberg**  
MINISTERIUM FÜR WIRTSCHAFT, ARBEIT UND TOURISMUS

**CBRE**